

**** SILKEN PUERTA MADRID



Class: 4*

Address: Calle Juan Rizi, 5
28027 Madrid

Phone: +34 917 438 300

Fax: +34 917 438 301

E-mail Sales Dept.: comercial.puertamadrid@hoteles-silken.com

E-mail C&B Dept.: ventas.puertamadrid@hoteles-silken.com

E-mail Reception Dept.: recepcion.puertamadrid@hoteles-silken.com

Web: www.hotelpuertamadrid.com

GPS Coordinates: 40.447605, - 3.6369648

Built: 2002

Reference: *In the heat of design.* The Hotel Silken Puerta Madrid adds its architecture and design to its quality service and strategic location. This is a hotel with modern lines and contemporary furniture. All the details are carefully chosen to make our guests feel like in a warm and exclusive environment.

GDS Codes Amadeus UIMADSPM
Sabre IU37211

Worldspan UI42816
Galileo IU49622



**** SILKEN PUERTA MADRID

FACILITIES AND SERVICES

- **LA ORZA Restaurant**

Open from Monday to Friday from 13.30 to 16.00 and from 20.30 to 23.30

Traditional *cuisine* with some actual and innovative

Grill and roast specialized. Long wine menu

Consult our timetable in summertime

- **Bar Cafeteria**

Open from Monday to Sunday from 08.00 to 01.00

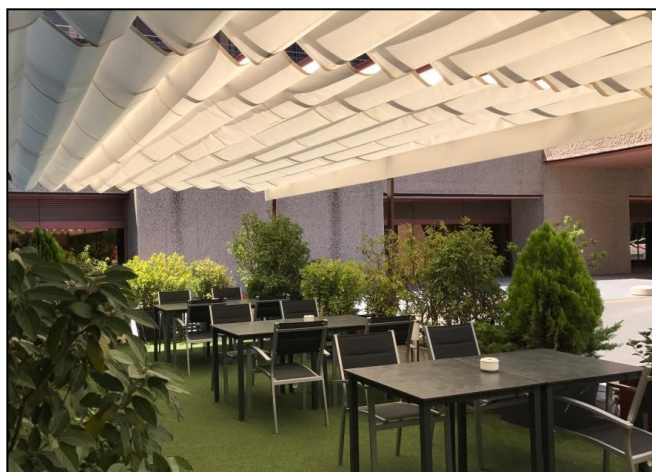
- **LA ORZA Terrace**

Open from June to September from 10.00 to 01.00

- **Buffet Breakfast**

From Monday to Saturday from 07.00 to 11.00

Sunday and bank holidays from 08.00 to 11.00



* Times may change depending on the Hotel operation



*** SILKEN PUERTA MADRID



FACILITIES AND SERVICES

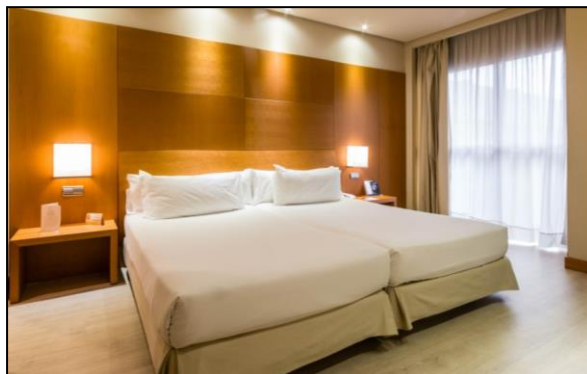
- **24 hours reception**
- **Concierge service**
- **Free Wi Fi in all the hotel**
- **Free fitness centre**
- **Laundry and dry cleaning service**
- **Onsite parking 24hours 2.50€/hour and 20€/day**
- **Business centre**
- **Room service 08.00-00.00**
- **Shuttle service Madrid Barajas airport-IFEMA (8 people)**
Under availability and with scheduled appointment
Check times of availability
- **Security onsite from 00.00 to 08.00**



* Times may change depending on the Hotel operation



**** SILKEN PUERTA MADRID

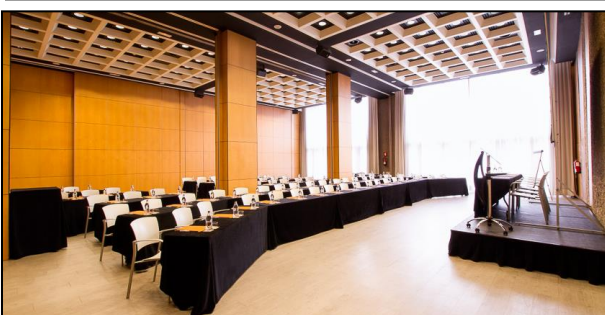


ROOMS

- **194 spacious and outward-facing rooms**
 - Marble *ensuite* bathroom with bath and shower cabin
 - One bed 1.80/2.10m or twins 1.20m each
 - Flat TV 32" with Canal + and satellite connection
 - Free safety box with electric plug
 - Climate control
 - Wi-Fi
 - Phone
 - Big desk
 - Amenities designed by Javier Mariscal
 - Minibar
- **We have:**
 - 186 Comfort rooms with 24m²
 - 2 Junior Suites with 35m²
 - 6 Suites with bedroom, living and dressing room in 56m²



**** SILKEN PUERTA MADRID



MEETING-ROOMS

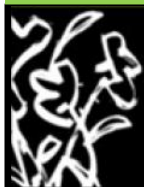
The meeting-rooms follow the contemporary style and design of the hotel, with stone and wooden walls and big French windows. Located in the lobby floors, they are sunlight and 5.5m ceiling high. Their panels let to modify the spaces depending on the needs of the client and have five independent modular rooms.

Our philosophy is to offer a personal and professional treatment from each hotel department. Our welcoming and kind services with the facilities are the great assets of Hotel Silken Puerta Madrid.

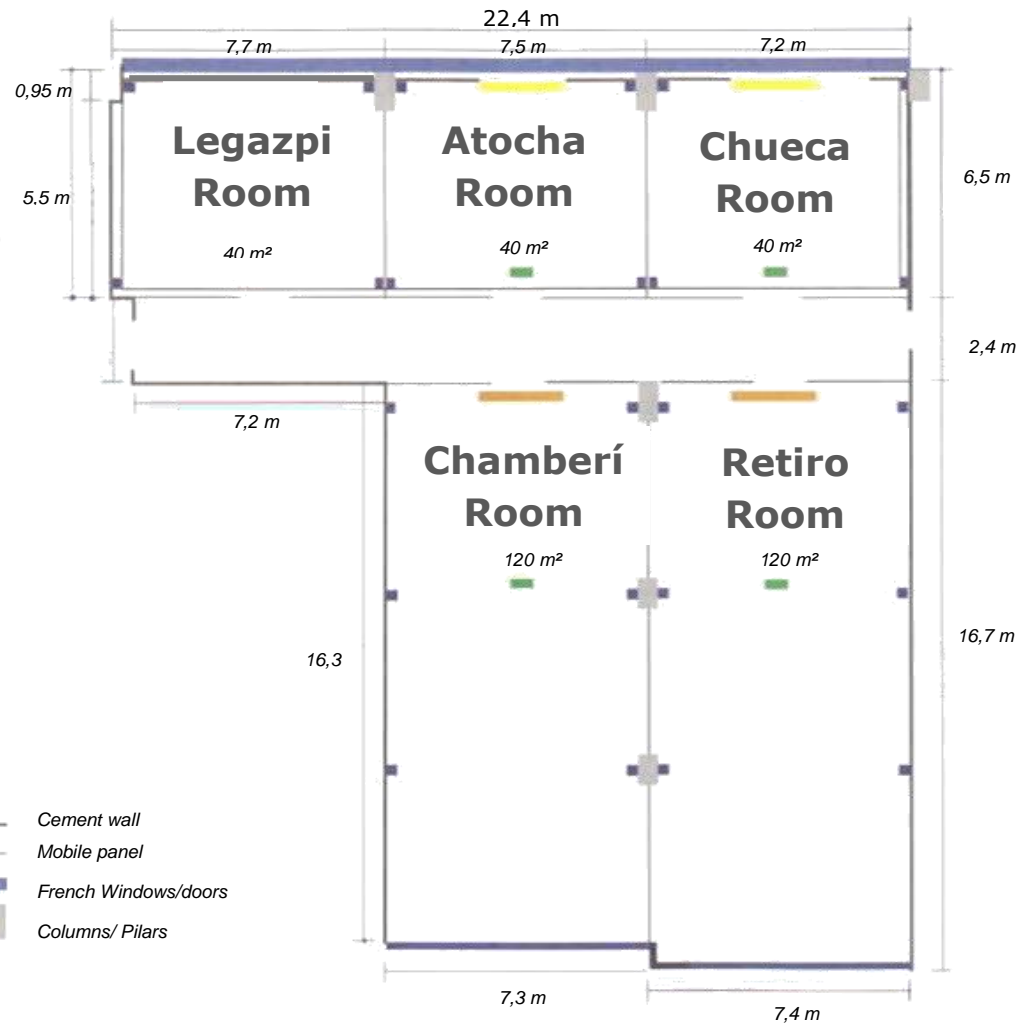
Our 420m² are the best place for business meetings, banquets, conventions and social Events.

The meeting-rooms have Wi-Fi internet connection

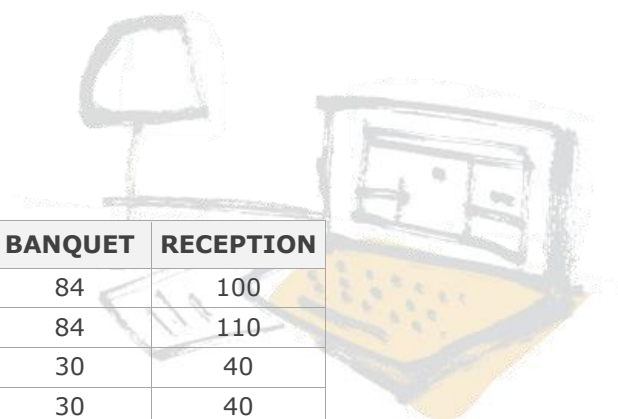
We include: screen (1.80x1.80), a flipchart, pens, notebooks, mineral water and sweets.



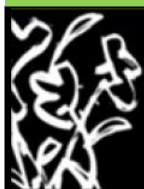
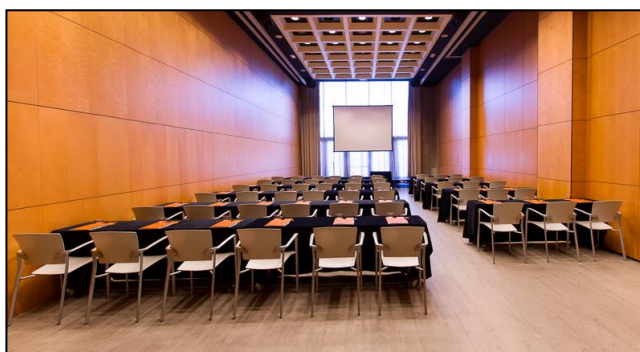
**** **SILKEN PUERTA MADRID**



**** SILKEN PUERTA MADRID



MEETING-ROOMS	m²	Ceiling Hg	THEATER	CLASSROOM	U	H-SQUARE	BANQUET	RECEPTION
CHAMBERÍ (1)	120	5.5	102	78	48	50	84	100
RETIRO (2)	120	5.5	110	87	48	50	84	110
LEGAZPI (3)	40	5.5	33	25	20	24	30	40
ATOCHA (4)	40	5.5	33	25	20	24	30	40
CHUECA (5)	40	5.5	33	25	20	24	30	40
ARGÜELLES	30	2.80	27	24	16	20	20	29
PUERTA MADRID (1+2+3+4+5)	420	5.5	252	144	62	76	300	350
240m² ROOM (1 + 2)	240	5.5	197	118	48	50	168	200
120m² ROOM (3 + 4 + 5)	120	5.5	110	87	48	50	84	100
80m² ROOM (3 + 4) or (4 + 5)	80	5.5	75	57	40	42	72	84
SUITE	15	2.80	-	-	9	11	-	-



**** SILKEN PUERTA MADRID

ACCESS TO THE HOTEL

By plane

8.20km International Adolfo Suárez Madrid Barajas Airport (8 min. by car)
Ask for our shuttle service

By train

13.9km Atocha Renfe Station (19 min. by car)

By bus

Línea 114: Avenida de América – Barrio del Aeropuerto

Línea 146: Callao – Los Molinos

By metro

Línea 5 (green): Suances 20 minutes walking

Ask for our shuttle service

DISTANCES

To the city center: 9.1km (15 min. by car)

To IFEMA: 3.6km (7 min. by car) Ask for our shuttle service

Taxi stop: 20 meters



*****SILKEN PUERTA MADRID**

